

EVE™

Automated Cell Counter

User Manual



All the materials in this user guide are protected by Korean and international copyright laws. They cannot be reproduced, translated, published or distributed without the permission of the copyright owner.

EVE™ User manual

Website : www.nanoentek.com

E-mail : sales@nanoentek.com



Manufactured by

NanoEntek, Inc.

851-14, Seohae-ro, Paltan-myeon, Hwaseong-si, Gyeonggi-do, 18531, Korea

Tel. : +82-2-6220-7942 Fax. : +82-2-6220-7999

The information in this manual is described as accurately as possible.

Firmware and software changes and updates may change without prior consent or notification.

Copyright © 2013 by NanoEntek, Inc.

All rights reserved. Published in Korea.

Documentation : **NESMU-EVE-001E**

Revision history : V.0.0	Date : MAR 2013
: V.0.5	Date : MAY 2013
: V.0.8	Date : OCT 2013
: V.1.5	Date : APR 2020
: V.1.6	Date : July 2021

Table of contents

Product contents	4
Product overview	5-6
Description	7-8
Installation	9
<hr/>	
Operation	10-24
Settings	10
Cell mode parameters	10-12
Date and time setup	13
Recommend actions	14
Cell counting	15-19
Transferring data to a computer	20
Using the beads mode for counting beads	21-22
Calibrating	23-24
<hr/>	
PC software	25-32
Installation	25-26
Open the data	27-28
Cell gating	29
Counting	30
Spread sheet	31
Prepare report	32
<hr/>	
Cleaning and maintenance	33
Troubleshooting	34-35
Error codes	36
Warranty	37
Safety precautions	38-40
Product specifications	41
Ordering information	42
Technical support	43

Product contents

EVE™ is shipped with the following components.

Please check that all items listed below were shipped, after receiving the instrument.

If any items are missing or damaged, contact your local distributor or e-mail

sales@nanoentek.com.

Automated cell counter

1 EA



Cat. No. EVE-MC

Power cord with 4 adaptor

cords (4 pcs/set, for U.S./Canada/
Taiwan/Japan, Europe or UK)

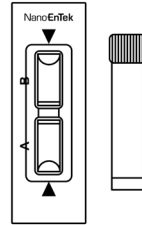
1 SET



Cell counting slides

(with 1.5 mL of Trypan blue (0.4%))

1 BOX (50 slides/box)



Cat. No.
EVS-050

USB drive

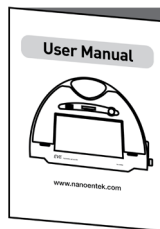
2 GB

1 EA



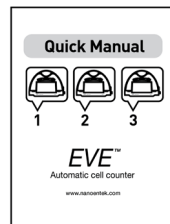
User manual

1 EA



Quick manual

1 EA



Product overview

The EVE™ Automated Cell Counter uses state-of-the-art optics and image analysis to automatic cell counting. The EVE™ is a benchtop counter designed to measure cell count and viability (live, dead, and total cells) accurately and precisely, using the standard trypan blue technique.

Using the same amount of sample that you currently use with the hemocytometer, the EVE™ takes less than 20 seconds per sample for a typical cell count and is compatible with a wide variety of eukaryotic cells and provides information on cell size.

The EVE™ offers an intuitive user interface, and provides the option to save and print cell count data using the EVE™ Software and USB drive supplied with the instrument or available separately.

The EVE™ is supplied with disposable EVE™ Cell counting slides that contain two enclosed chambers to hold the sample to allow you to measure two different samples or perform replicates of the same sample. The cell counting occurs in the central location of the counting chamber and the volume counted is 0.4 μL , the same as counting four (1 mm \times 1 mm) squares in a standard hemocytometer.



Product overview

Features and benefits

—

User-friendly, benchtop design for simple, fast, automated cell count and viability measurements within **20 seconds**.

—

Provides data based on cell size and is compatible with a **wide variety** of eukaryotic cells without the need for any special changes between large and small sizes.

—

Measures cell concentrations ranging from **1×10^4 to 1×10^7 cells/mL** and cells with sizes ranging from **5 μm to 60 μm** .

—

Provides the **clump cell counting function** to get more accurate results (using EVE™ PC software).

—

Uses **disposable cell counting slides** that eliminate washing steps and cross contamination between samples.

—

Saves and prints cell count data including images using the EVE™ software and EVE™ USB drive.

—

Presents comprehensive data with graphical reports and **as a .CSV** (comma separated value) file for sample comparisons.

Description

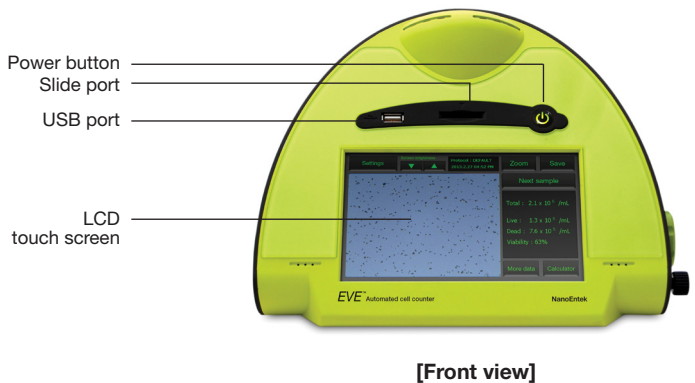
Front view

Power button The power button is used to turn the instrument on and off. The red status light indicates that the instrument is off; the green status light indicates that the instrument is on.

LCD touch screen Located in front of the instrument, LCD touch screen contains buttons for all the functions needed and displays data from the cell count.

Slide port The slide port is used to insert the EVE™ Cell Counting Slide containing the sample with trypan blue stain into the counter for analysis.

USB port The USB port allows you to transfer and save the cell count data and image to your computer for record keeping and printing purposes. The USB drive supplied with the instrument or any other standard USB drive is inserted into the USB port for data transfer.



Description

Rear and side view

Power inlet

Connect the counter to an electrical outlet using the supplied power cord and the appropriate plug, based on the electrical outlet configuration in your country.

Image adjustment (focus) knob

The image adjustment (focus) knob is used to adjust the image quality to obtain better contrast between live (bright centers) and dead (dark blue centers) cells. This is important to obtain accurate cell counts and viability measurements.

Focus lock knob

The focus lock knob is used to lock the image adjustment (focus) knob once the image is optimized. There is no need to use the focus lock knob, but it is available for convenience, if you are measuring multiple samples of the same cell type.



Power inlet

[Rear view]



Focus lock

Focus knob

[Side view]

Installation

Installing EVE™ Automatic cell counter

1. After unpacking the instrument, place the instrument on a flat, level, dry surface.

2. Plug one end of the supplied power cord into the EVE™. To the other end attach the appropriate plug adaptor, based on the electrical outlet configuration in your country.



3. Plug the power cord into the electrical outlet. Be sure to use only the power cord supplied with your instrument. Powering the instrument with an unapproved power cord may damage the instrument.

4. When you are ready to use, start the EVE™ by pressing the **Power button**.



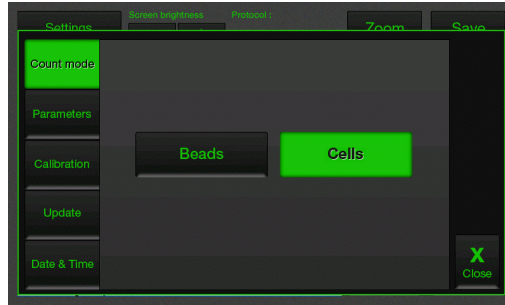
5. When the instrument is turned on, the Start Up screen is displayed. Here you can proceed immediately to cell counting, set up the instrument for cell or bead count, or adjust the screen brightness.



Operation

Settings

1. Press **Settings** from the Start-Up screen to display Settings.



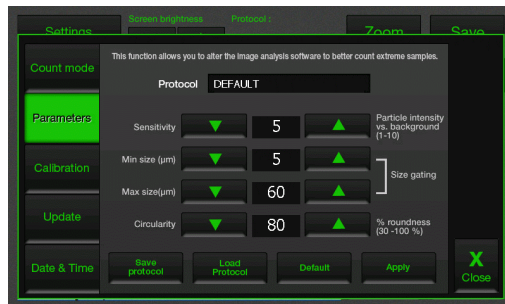
The settings menu allows you to set up the following:

- **Count mode** to operate the instrument for cell counting (choose Cells) or bead counting (choose Beads)
- **Parameters** (see below and next page for details)
- **Calibration** to calibrate the instrument (page 24)
- **Update** to install new firmware versions as they become available
- **Date and Time** to set up date and time (page 13)
- Use the scroll buttons to adjust the **screen brightness**.

Cell mode parameters

1. Press **Parameters** from the settings screen to display Cell mode parameters screen.

The Parameters function allows you to change the image analysis algorithm for specific or mixed cell types, and the specific parameters must be determined empirically.



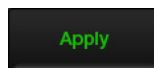
Operation

Cell mode parameters

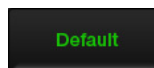
2. The cell mode parameters are described below:

- **Sensitivity** (refers to the contrast of the objects from the background). Adjusting the sensitivity higher makes instrument more sensitive to objects; useful for cells that do not stain well with trypan blue while adjusting the sensitivity lower makes the instrument less sensitive and is useful if there is a lot of background.
- **Minimum cell size** is used to determine the low range of cell size to include in the measurement. The algorithm first identifies all objects, and calculates the average size (e.g., 15 μm). From the percent of average size setting, the algorithm calculates the smallest object size to include in the final measurement (e.g., 70% of 15 is 10.5 μm ; $15 - 10.5 = 4.5$ μm ; 4.5 μm would be the smallest particle included in the count). Adjusting the number up, increases inclusiveness thereby decreasing the lower cell size range (e.g., 50% of 15 is 7.5 μm ; $15 - 7.5 = 7.5$ μm).
- **Maximum cell size** is used to determine the high range of cell size to include in the measurement. The algorithm first identifies all objects, then calculates the average size (e.g., 15 μm). From the percent of average size setting, the algorithm calculates the largest object size to include in the final measurement (e.g., 200%; 200% of 15 μm = 30 μm ; 30 μm is the largest cell size included in the measurement).
- **Circularity** is used to determine the objects to include in the measurement based on roundness. Increasing the value from 80% requires objects to be more round for inclusion in the measurement. Decreasing the value from 80% allows objects to be less round. Adjusting this may be useful if the cell type is not particularly circular or perhaps oddly shaped.

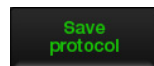
After modifying any parameters, press **Apply** to make the changes.



To restore default parameters, press **Default**.



3. Press **Save Protocol** to create a new protocol.



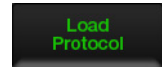
Operation

Cell mode parameters

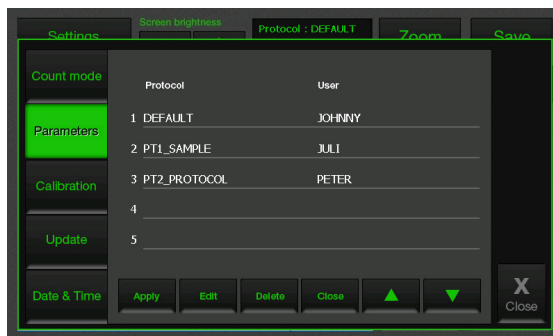
4. Type **Protocol Name** and **User Name** in the appropriate fields, and press **Save** again.



5. Once a protocol is saved, it is available for use at any time. Press **Load Protocol**.



6. The protocol appears in the protocol menu. Use the up and down arrows to find your saved protocol. To use the protocol, select one of protocol and press **Apply**.

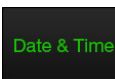
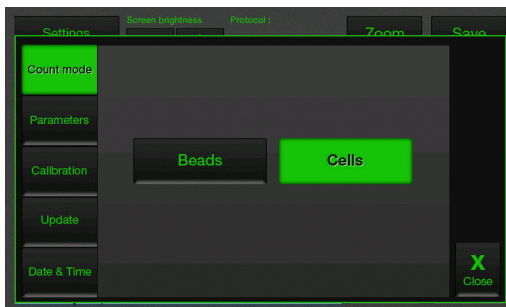


- » press **Delete** to delete protocol.
- press **Edit** to edit protocol.

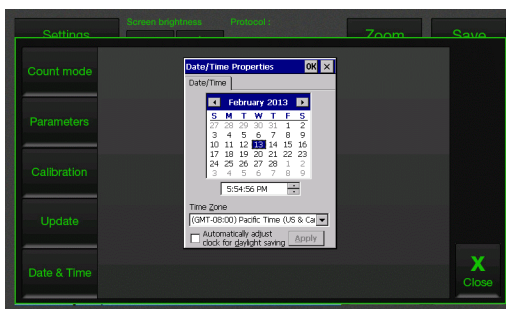
Operation

Date and time setup

1. Turn on the EVE™ by pressing the **Power button**. The Start up screen is displayed after a few seconds.
2. Press **Settings** and then press **Date and Time**.



3. The **Date/Time Properties** screen is displayed. To select the month and day, scroll to the appropriate month using the arrow keys and then press the day on the calendar.
» Use a pointed object, like a stylus or pipette tip, to push the small buttons on the calendar.



4. To select the time, scroll to the appropriate time and select **Automatically adjust clock for daylight saving**, if necessary. Press **Apply** or **OK** to make the date/time changes. The updated date/time is displayed on the top of the window. Once the date/time is set, there is no need to set it each time the instrument is turned on.
5. Press **Close** to exit the screen.



Operation

Recommend actions

To obtain the best results, follow these recommendations:

- Wear Protective gloves during sample handling.
- Do not touch the optical surfaces of the EVE™ Cell counting slides. Hold the cell counting slides by the edges.
- Use the EVE™ at room temperature only (5 - 40 °C).
- For accurate viability count results, ensure the counting area is covered with cell suspension and count cells within 3 minutes of mixing the cells with trypan blue solution as trypan blue is toxic to cells. For best data with biological samples, we recommend counting at least two samples and taking an average.
- The EVE™ is supplied pre-calibrated. To recalibrate your instrument, see page 24.
- The EVE™ memory holds one set of data. Save your data to the USB drive after each reading. You may transfer the data to your PC, using the USB drive immediately as described in **Transferring data to a PC** (page 21).
- After using EVE™, appropriately dispose slides as biohazardous waste.
Do not reuse the cell counting slides.

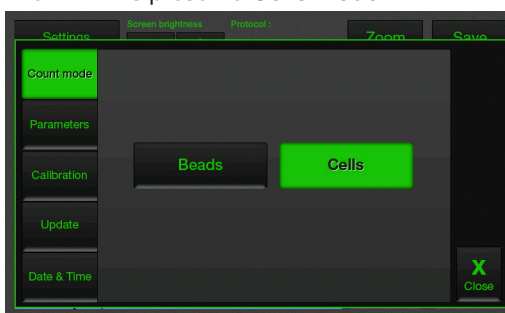
Operation

Cell counting

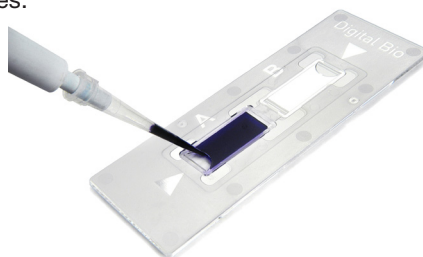
1. Push the **Power button** to start the instrument. The Start-up screen is displayed.



2. The EVE™ is preset to **Cells mode**.



3. Mix well the 10 μ L of your sample and the 10ul of 0.4% trypan blue stain (in a 1:1 ratio) using a pipette.
4. Load 10 μ L of the sample mixture on EVE™ Cell counting slide (side A) using a pipette.
The two chambers of the slide are labeled “A” and “B” for easy tracking of your samples.



Operation

Cell counting

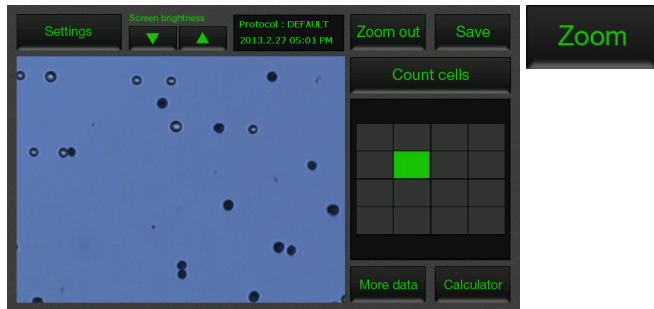
5. Insert the EVE™ Cell counting slide, sample side (side A) first into the slide port on the instrument, you will hear a soft click, if the slide is pushed in correctly. Each chamber is counted separately.



6. Press the **Count cells** or **Next sample** button.

Count cells

7. Adjust the image by pressing the **Zoom** button. Navigate by pressing the location you like to see on the grid.



8. While viewing cells in the zoom mode, use the **Focus knob** to adjust the image.

» After you have counted the first sample, you may not have to use the Focus knob again. If measuring multiple samples of the same approximate size, you may lock the Focus knob. You are able to unlock the knob later, to adjust the image.

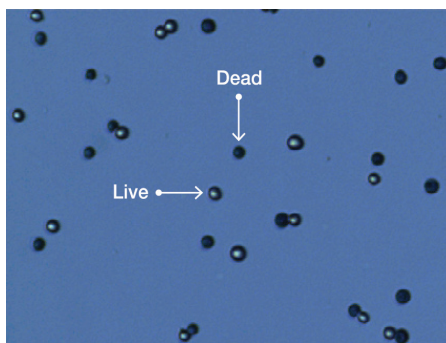


Operation

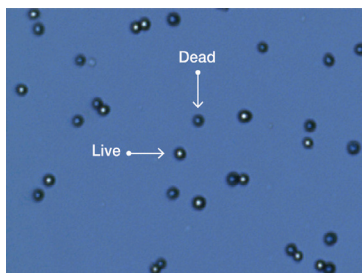
Cell counting

Optimize the image for analysis such that:

- **Live cells** have bright centers and dark edges.
- **Dead cells** have a uniform blue color throughout the cell with no bright centers.

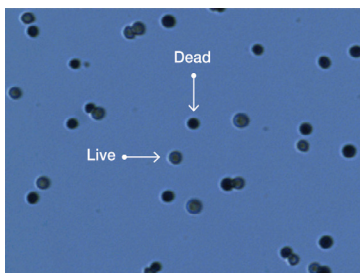


<Correct Image>



<Incorrect Image 1>

Dead cells have bright, blue centers and are counted as the live cells.



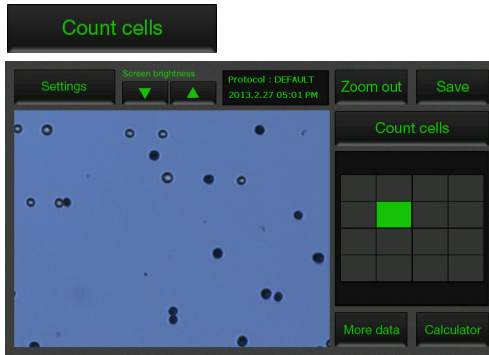
<Incorrect Image 2>

Live cells have dark centers and are counted as the dead cells.

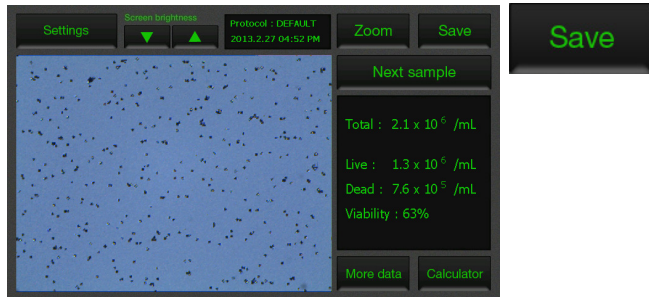
Operation

Cell counting

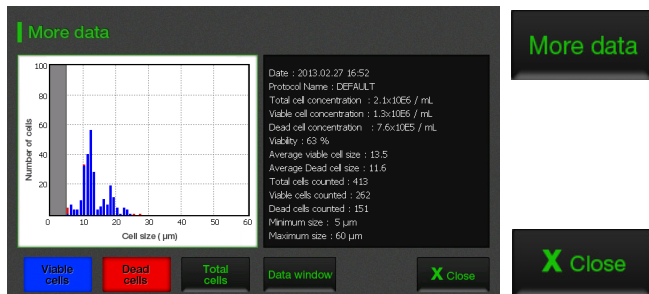
9. When you are satisfied with the image, press **Count Cells**.



10. After 20 seconds to count each sample, and the cell count for live, dead, and total cells as well as percentage viability is displayed on the screen. Record the cell count, or insert a USB drive and press **Save button** (see page 20).



11. To see more details on the data as well as graphical representation of the data, press the **More data** button.

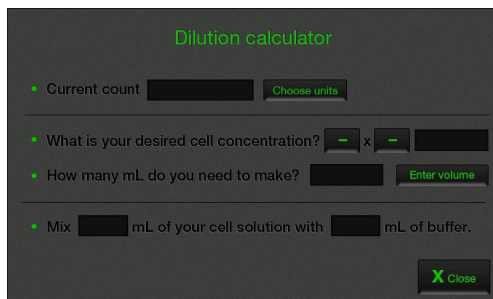


- » Press the **Close** button to return to the main screen.

Operation

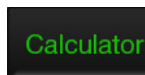
Cell counting

12. The **Calculator button** allows you to quickly calculate adjustments to the cell suspension to obtain a desired concentration.



Dilution calculator

- Current count
- What is your desired cell concentration? x
- How many mL do you need to make?
- Mix mL of your cell solution with mL of buffer.



13. To count the cells in the other side of the slide (side B), remove the EVE™ slide after side A is counted by pushing in the slide slightly and then pulling the slide out. Turn the slide around and reinsert into the slide inlet and repeat the procedure.



14. The EVE™ USB drive holds one set of data. To save your data for future analysis or archiving, you must record the data or save after each reading.

See page 21 for **Transferring data to a PC**.

15. After recording or saving the data, remove and discard the slide appropriately as bio-hazardous waste.

16. At this point, the EVE™ is ready for another sample. If you are not using the instrument, press the **Power button** to turn off the instrument.

» If the touch screen is not responding, you can turn off the instrument by pressing and holding the **Power button** for 4 seconds.

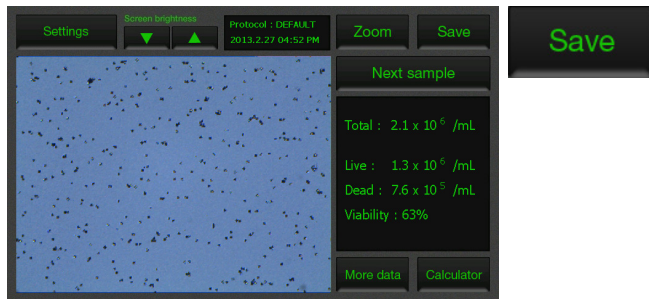
Operation

Transferring data to a computer

1. To archive your data or generate a printed report, insert EVE™ USB drive into the USB port.



2. Save your data on the USB drive by pressing the **Save** button on the main screen. The image and the counting data are saved.



3. Enter the file name using the keypad buttons displayed on the Save menu.



- » The numerical data is also automatically saved as a .CSV file that can be opened with any spreadsheet program. To delete all data from the .CSV file and start with a blank file, press **Start .CSV file** button.

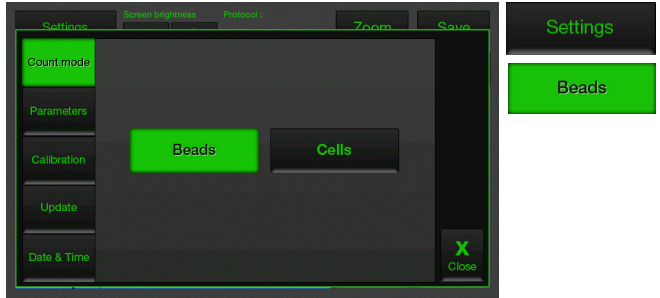


4. Transfer the EVE™ USB drive to the USB port on your PC. You may open the .CSV file using a spreadsheet program. To see the image and generate a report, use the EVE™ PC software (on page 25).

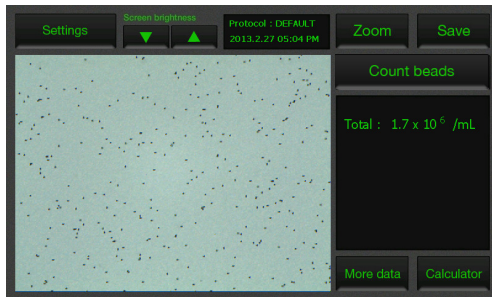
Operation

Using the beads mode for counting beads

1. Press **Settings** and then press **Beads** to place the instrument into bead counting mode.



2. Put 10 μL of beads to 10 μL of 0.4% trypan blue stain, (in a 1:1 ratio) and mix well. Mix gently by pipetting up and down.
3. Load 10 μL of the sample mixture on EVE™ Cell counting slide (side A or B) using pipette. The two chambers of the slide are labeled “A” and “B” for easy tracking of your samples.
4. Insert the EVE™ Cell counting slide with beads into the slide port on the instrument, making sure that the sample side is inserted completely into the instrument.
5. Press **Count beads** button.

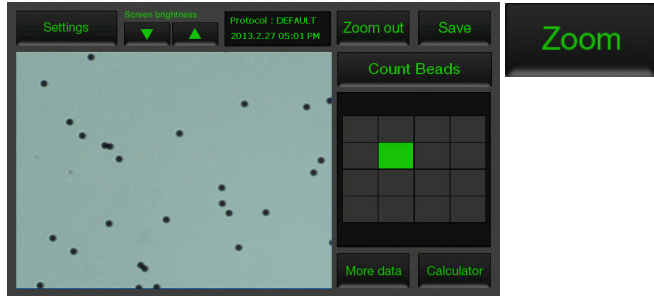


- » You can check the result in detail pressing **More data** button.

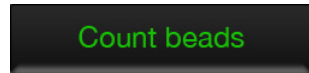
Operation

Using the beads mode for counting beads

- Adjust the bead image by pressing the **Zoom**. Navigate the fields by pressing the location you like to see on the grid.



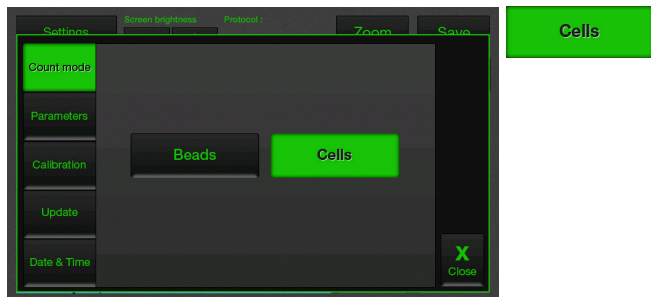
- When you are satisfied with the image, press the **Count beads**.



- The instrument takes approximately 20 seconds to count each sample and the bead count is displayed in the screen. Record the bead count.

- To count beads in the other side of the slide chamber (side B), remove the slide after side A is counted, turn the slide around, and reinsert into the slide inlet to repeat the counting procedure.

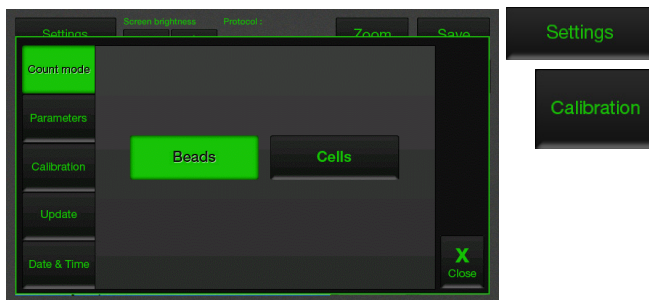
- After counting beads, place instrument into **Cell Count mode** for counting cells by pressing **Settings** and then pressing the **Cells**.



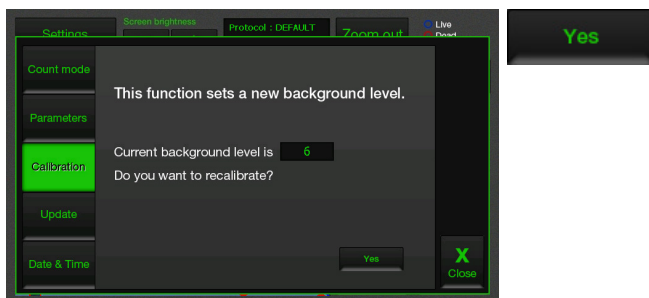
Operation

Calibrating

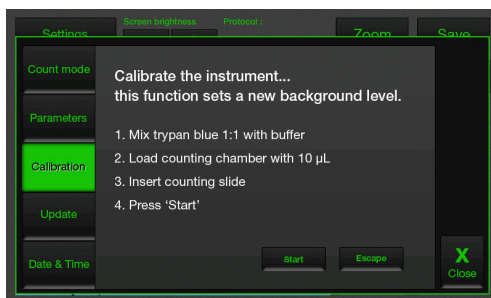
1. Press **Settings** and then press **Calibration**.



2. Check the current background level and press **Yes** to recalibrate.



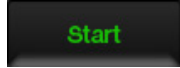
3. To recalibrate the EVE™, mix 10 μ L trypan blue solution with 10 μ L of a standard buffer, (in a 1:1 ratio) such as phosphate buffered saline (PBS). Mix thoroughly.



Operation

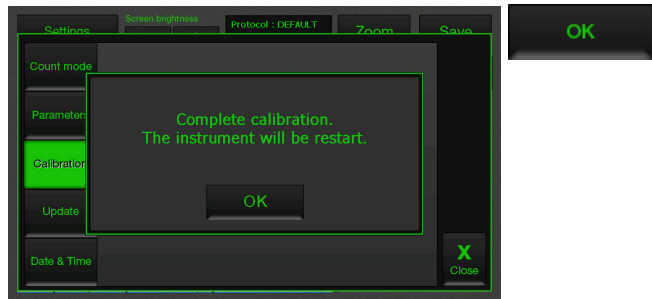
Calibrating

4. Load 10 μL of the sample mixture to the chamber ports on one side of the EVE™ Cell counting slide. Press **Start**.



5. After calibration is completed, press the **OK** to restart the instrument and proceed to cell counting.

There is no need to recalibrate each time the instrument is turned on.



PC software

Installation

The EVE™ is designed for stand-alone use and does not require the use of an external computer.

If you wish to archive data and generate reports, you must transfer data to your computer, and use the EVE™ software to generate and print reports (see instructions, below).

Alternatively, data stored in the .CSV file may be transferred to your computer by the USB drive and imported into any spreadsheet program, without the need for EVE™ PC software.

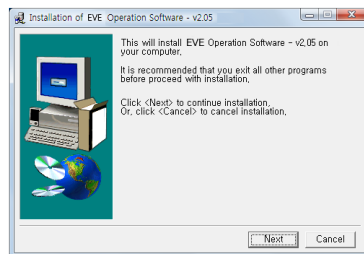
Computer requirements (EVE™ is not compatible with Macintosh operating systems)

- USB port (1.1 or later, 2.0 is recommended)
- Windows XP /2000/Vista/7

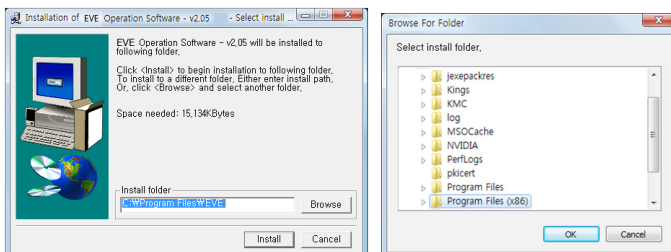
1. Insert the supplied USB drive into the computer. Then open the file “**EVE™ PC Software**”.



2. The start-up dialogue of the software will appear. Click ‘**Next**’ to start installation.



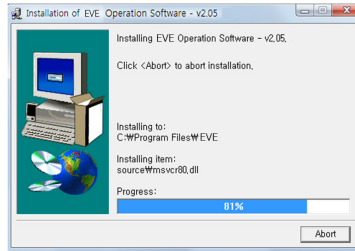
3. If you want to change installation folder, click ‘**Browse**’ and choose the location that you want. And click ‘**Install**’.



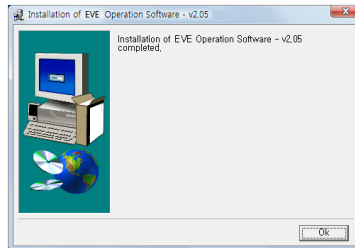
PC software

Installation

4. The computer activates the installation of the Software.



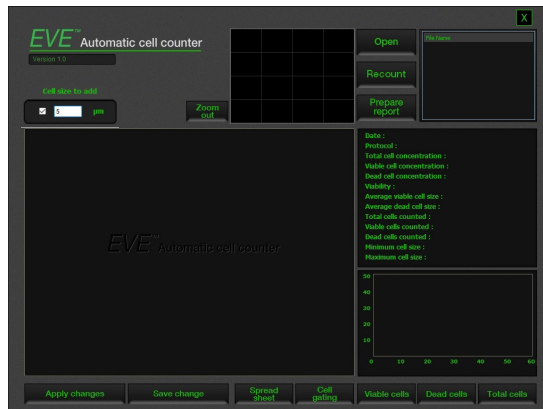
5. Click 'OK' when Installation is complete.



6. When the software is installed, the PC software icon appears on your desktop.



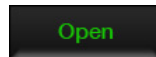
7. Click on the PC software icon on your PC, Start-up screen will be shown.



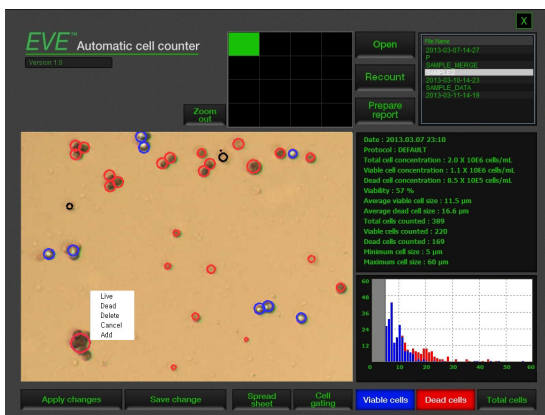
PC software

Open the data

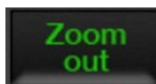
1. Insert the USB to USB port of computer. And Click **Open** to load data files transferred from the instrument.



2. Select the file that need to adjust counting result in different condition.

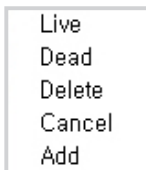


3. Adjust the cell image by pressing the **Zoom**. Navigate the fields by clicking the location you like to see on the grid.



4. If it is necessary, you can adjust cell counting result using **Right** of mouse interface.

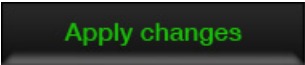
You can change the circle mark recognized by counting algorithm of each cell to live or dead. And also, each cell can be deleted or added from counting result.



PC software

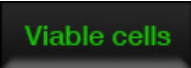
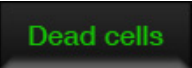
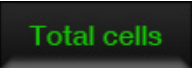
Open the data

5. Click **Apply changes** to make the changes.

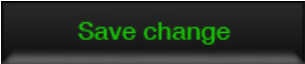
A dark grey rectangular button with rounded corners and a subtle gradient, containing the text "Apply changes" in a bright green, sans-serif font.

6. You can check cell size graph. Cell size graph will be shown with different color for viable cells, dead cells and total cells.

» Using each button, you can check individual result for viable cells, dead cells and total cells.

A dark grey rectangular button with rounded corners and a subtle gradient, containing the text "Viable cells" in a bright green, sans-serif font.A dark grey rectangular button with rounded corners and a subtle gradient, containing the text "Dead cells" in a bright green, sans-serif font.A dark grey rectangular button with rounded corners and a subtle gradient, containing the text "Total cells" in a bright green, sans-serif font.

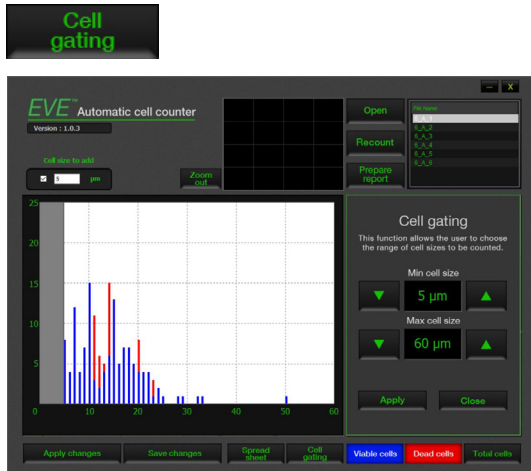
7. If modified image should be saved, then click **Save changes**.

A dark grey rectangular button with rounded corners and a subtle gradient, containing the text "Save change" in a bright green, sans-serif font.

PC software

Cell gating

1. Select the saved file you wish to open and adjust range of cell size using **Cell gating**.

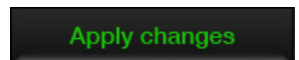


2. Determine the value for minimum cell size and maximum cell size using up and down arrow button.

» **Minimum cell size** is used to determine the low range of cell size to include in the measurement. The algorithm first identifies all objects, and calculates the average size. From the percent of average size setting, the algorithm calculates the smallest object size to include in the final measurement. Adjusting the number up, increases inclusiveness thereby decreasing the lower cell size range.

» **Maximum cell size** is used to determine the high range of cell size to include in the measurement. The algorithm first identifies all objects, then calculates the average size. From the percent of average size setting, the algorithm calculates the largest object size to include in the final measurement.

3. After modifying cell size, click **Apply changes** to make the changes.



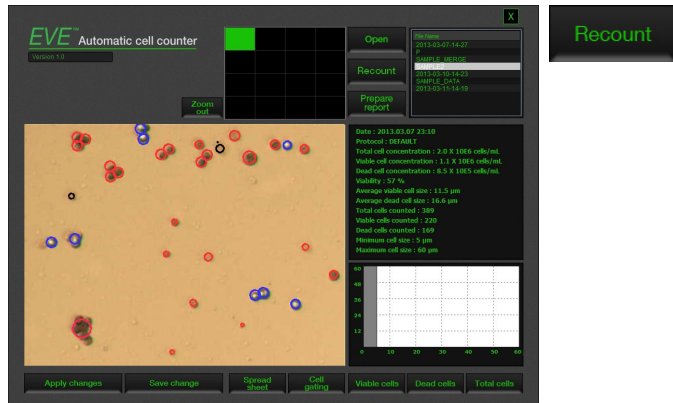
4. You can check modified cell size graph will be shown.

PC software

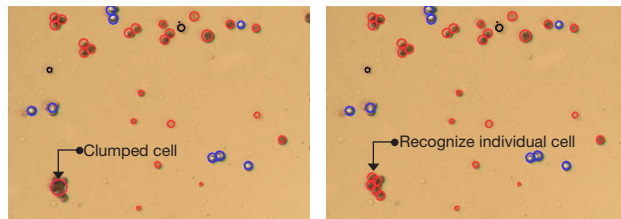
Counting

1. If the **cells clumping** together are existed, these will be counted counted for one cell by counting algorithm. For this reason, the cell counting result may not be accurate.

In this case, select the saved file you wish to open and click Counting button for re-counting the cells, exception algorithm will solve this problem. User can achieve more accurate result.



2. You can check more accurate counting result.



<Result before recounting>

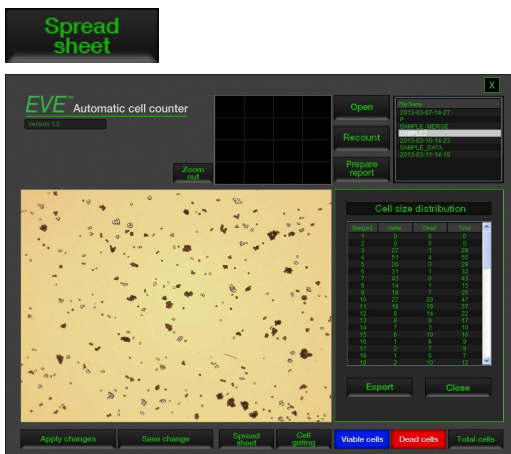
<Result after recounting>

» Before recounting, cells clumping together could be counted one cell. But after recounting, software algorithm will recognize and count each of them.

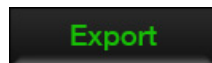
PC software

Spread sheet

1. Select the saved file you wish to open and click **Spread sheet**.



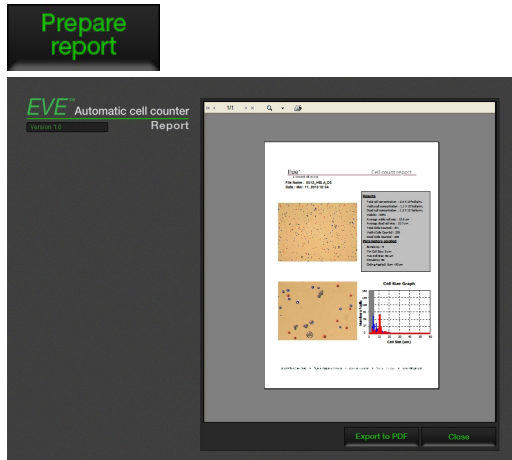
2. User can check cell distribution according to cell size differences. And also, this information can be exported by **Export**.



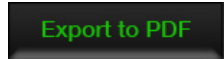
PC software

Prepare report

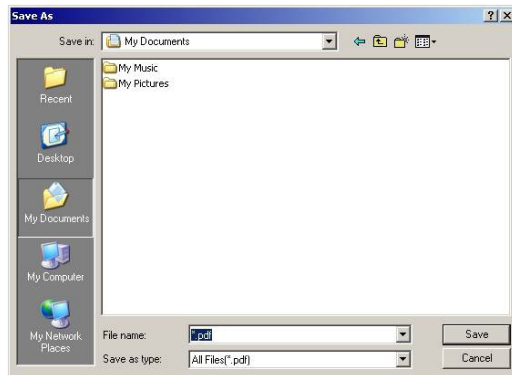
1. Select the saved file you wish to open and click **Prepare report**.



2. You can check preview of report before export to PDF file.
3. Click **Export to PDF** to obtain a printable version of the image and data.



4. Type the file name and select location for saving file.



5. You can check the file on the location you selected.

Cleaning & maintenance

Cleaning and maintenance

Clean the surface of the EVE™ with a damp cloth.

To clean the LCD screen, turn off the EVE™, disconnect the power cable, and clean the LCD screen with a soft cloth lightly moistened with LCD cleansing detergent. Cleaning the screen with excessive force can damage the LCD the screen. Wipe the screen dry immediately. Do not reuse the cell counting slides.

The EVE™ does not need regular maintenance. To troubleshoot problems with EVE™, contact technical support (page 43).

Do not perform any repairs or service on the EVE™ to avoid damaging the instrument.

Troubleshooting

Inaccurate cell count

- Do not insert the EVE™ Cell counting slide upside-down as this may introduce liquid into the instrument that could damage it.

- Do not reuse the EVE™ Cell counting slides, as leftover dye from the previous reading may affect the next reading.

- Do not use any other counting slides such as a glass hemocytometer with the EVE™ as it results in inaccurate cell count and may damage the instrument.

- Ensure that the sample covers the entire counting area and the EVE™ Cell counting slide is inserted completely into the counter.

Sample handling

- The EVE™ is designed to read samples from 1×10^4 cells/mL to 1×10^7 cells/mL, with the highest accuracy between 1×10^5 cells/mL and 4×10^6 cells/mL.

Low and high readings

If your sample is not in this range, you may need to dilute the sample or add more cells and read the sample again.

Poor image quality

- While viewing cells in the Zoom mode, use the focus knob to adjust the image to ensure that live cells have bright centers, and dead cells have dark/blue centers.

- Ensure the cells are not clumped.

Cell clumping

- To maintain instrument sensitivity, we recommend that you calibrate the counter each year as described on page 23.

Error code

- See page 36 for a description of error codes.

Troubleshooting

Saving and printing problems

Incorrect USB drive

- Use the USB drive supplied with the counter or an USB 2.0 drive as some types of USB drive are not detected or recorded by the counter.

- Do not save too many files in a USB drive as the counter may slow down to read the USB drive.

Accidentally removed the USB drive

- Do not remove the USB drive or turn off the counter when updating.

- Do not remove a USB drive when saving or reading data as it may damage the counter.

Instrument not updating firmware

May be using a corrupted firmware file or a damaged USB drive

- Download a new version of the firmware from the website on a different USB drive and try updating the firmware on the EVE™. Contact technical support (page 43) if the problem persists.

Error codes

This section describes the error codes displayed by the EVE™ when it encounters a problem.

Contact technical support (page 43) for details on error codes and if you need to send the instrument back for servicing.

Position	Reason	Message	Error code
Driver	Camera driver loading fail		0101
	Camera driver open fail		0102
	Camera driver initializing fail	System Error (E0101)	0103
	GPIO driver loading fail	Reboot the device or refer to service personnel	0104
Preview	Camera preview fail		0201
Memory	Image buffer memory allocation fail		0301
	Camera memory allocation fail		0302

Warranty

Nanoentek warrants that EVE™ will be free from defects in material and workmanship for a period of one (1) year from date of purchase.

If any defects occur in EVE™ during this warranty period, NanoEntek will repair or replace the defective parts at its discretion without charge.

The following defects, however, are specifically excluded:

1. Defects caused by improper operation.
2. Repair or modification done by anyone other than Nanoentek or an authorized agent.
3. Damage caused by substituting alternative parts.
4. Use of fittings or spare parts supplied by anyone other than NanoEntek.
5. Damage caused by accident or misuse.
6. Damage caused by disaster.
7. Corrosion caused by improper solvent or sample.

For your protection, EVE™ being returned must be insured against possible damage or loss. NanoEntek cannot be responsible for damage incurred during shipment of a defective instrument. It is recommend that you save the original packing material in which the instrument was shipped. This warranty is limited to the replacement of defective products.

For any inquiry or request for repair service, contact sales@nanoentek.com or your local distributor.

Safety precautions

Review and follow the safety instructions below :

- Do not install the instrument in a humid place such as a greenhouse or an incubator to avoid a danger of electric shock. If water or other material enters the instrument, the adaptor, or power inlet, disconnect the power cord and contact a service person. For operating environment, refer to Product Specifications.

- Do not touch the main plug or power cord with wet hands.

- Always ensure that the power supply input voltage matches the voltage available at your location.
- This instrument is air-cooled and its surfaces may become hot during operation. When installing, leave a space of more than 10 cm (4 inches) around the instrument and do not place any objects between the instrument and walls.

- Do not install an instrument on a slant or a place prone to vibrations, which induces the risk of malfunction or damage of the instrument.

- Never insert any objects into the air vents of the instrument as this can result in electric shock, personal injury, and equipment damage.

- Plug the power cord firmly into the wall outlet and AC adapter.

- To avoid potential shock hazard, make sure that the power cord is properly grounded.

- Be sure to position the instrument such that it is easy to disconnect.

- Turn off an instrument before unplugging the power cord and/or moving the instrument.

- If an instrument is dropped or broken, disconnect the power cord and contact a service person. The warrant will be void in case of disassembly.

- Use only authorized accessories (adaptor, power cord, and USB driver).

Warning

Class A equipment is intended for use in an industrial environment. In the documentation for the user, a statement shall be included drawing attention to the fact that there may be potential difficulties in ensuring electromagnetic compatibility in other environments, due to conducted as well as radiated disturbances.

Consignes de sécurité

Examinez et suivez les consignes de sécurité ci-dessous :

· N'installez pas l'instrument dans un endroit humide comme une serre ou un incubateur pour éviter un risque de choc électrique. Si de l'eau ou tout autre matériau pénètre dans l'instrument, l'adaptateur, ou l'entrées d'alimentation, débranchez le cordon d'alimentation et contactez un technicien de service. Pour l'environnement d'exploitation, reportez-vous aux spécifications du produit.

· Ne touchez pas la fiche ou le cordon d'alimentation principale avec les mains mouillées.

· Assurez-vous toujours que la tension d'entrée d'alimentation correspond à la tension disponible dans votre endroit.

· Cet instrument est refroidi à l'air de sorte que ses surfaces peuvent devenir chaudes pendant le fonctionnement.

Lors de l'installation de l'instrument, laissez un espace de plus de 10 cm (4 pouces) autour de cet instrument et ne placez aucun objet entre l'appareil et le mur.

· N'installez pas l'instrument sur une pente ou un endroit soumis à des vibrations, ce qui induit le risque de dysfonctionnement ou d'endommagement de l'instrument.

· N'insérez jamais aucun objet dans les orifices d'aération de l'instrument, car cela pourrait entraîner un choc électrique, des blessures chez les utilisateurs et des dommages d'équipement.

· Branchez le cordon d'alimentation fermement dans la prise murale et l'adaptateur secteur aussi.

· Pour éviter un risque potentiel de commotion électrique, assurez-vous que le cordon d'alimentation est correctement mis à la terre.

· Assurez-vous de positionner l'instrument de telle sorte qu'il soit facile de débrancher l'instrument.

· Eteignez l'instrument avant de débrancher le cordon d'alimentation et / ou de déplacer l'instrument.

· Si l'instrument est cassé ou qu'il soit tombé, débranchez le cordon d'alimentation et contactez un technicien de service. Ne démontez pas l'instrument et la garantie sera annulée en cas de démontage.






· Utilisez uniquement les accessoires autorisés (l'adaptateur, le cordon d'alimentation, et le lecteur USB).

Warning

Le produit de classe A est conçu pour l'utilisation dans un environnement industriel. Dans la documentation de l'utilisateur, la déclaration doit être incluse pour attirer l'attention sur le fait qu'il peut y avoir des difficultés potentielles pour assurer la compatibilité électromagnétique dans d'autres environnements, en raison des perturbations rayonnées et conduites par l'électricité.

Safety precautions

Review and follow the safety instructions below :

Symbol	Meaning
	<p>Caution & Warning</p>
	<p>Protective earth (Ground)</p>
	<p>This instrument and consumables conforms to the Declaration of Conformity.</p>
<p>FCC compliance</p>	<p>This equipment has been tested and found to comply with the limits for a Class A digital device, pursuant to Part 15 of the FCC Rules. These limits are designed to provide reasonable protection against harmful interference when the equipment is operated in a commercial environment.</p> <p>This equipment generates, uses, and can radiate radio frequency energy and, if not installed and used in accordance with the instruction manual, may cause harmful interference to radio communications. Operation of this equipment in a residential area is likely to cause harmful interference in which case the user will be required to correct the interference at his own expense.</p>
	<p>WEEE (Waste Electrical and Electronic Equipment) symbol indicates that this product should not be disposed of in unsorted municipal waste. Follow local municipal waste ordinances for proper disposal provisions to reduce the environmental impact of WEEE.</p>
	<p>This product conforms to UL61010-1/CSA C22.2 No. 61010-1 "Safety Requirements for Electrical Equipment for Measurement, Control, and Laboratory Use, Part I: General Requirements." Instruments bearing the TUV symbol are certified by TUV Product Services to be in conformance with the applicable safety standards for the US and Canada.</p>

Product specifications

Environmental conditions

Operating power	AC 100 - 240 VAC, 1.5A
Frequency	50 / 60 Hz
Electrical input	12 VDC, 1.0 A
Installation site	Indoor use only
Operating temperature	5 - 40 °C
Maximum relative Humidity	20 - 80 %
Altitude	≤ 2,000 m
Transient category	Installation categories II
Pollution degree	2
Degree of protection	IPX0

EVE™ instrument

Instrument type	Benchtop cell counter
Counting time	< 20 seconds
Cell measurement range (cells/mL)	$1 \times 10^4 - 1 \times 10^7$
Optimal measurement range (cells/mL)	$1 \times 10^5 - 4 \times 10^6$
Cell size range	5 - 60 μm
Dimensions	27 cm (W) x 20 cm (D) x 19 cm (H)
Weight	2.1 kg

EVE™ Cell counting slide

Material	Polymethy methacrylate
Dimensions	75 mm (L) x 25 mm (W) x 1.8 mm (H)
Chamber depth	100 μm
Chamber volume	10 μL
EVE™ USB drive	2 GB

Ordering information

The following products can be used with the EVE™ and are available separately from NanoEntek.

Cat. No.	Description	Contents
EVS-050	EVE™ Cell counting slide	50 slides (100 counts, with 1 ea X 1.5 mL of trypan blue (0.4%))
EVS-1000	EVE™ Cell counting slide	1,000 slides (2,000 counts, with 20 ea X 1.5 mL of trypan blue)
EVS-5000	EVE™ Cell counting slide	5,000 slides (10,000 counts, with 100 ea X 1.5 mL of trypan blue (0.4%))
EBT-001	Test beads	1mL

Technical support

Visit the our Website at www.nanoentek.com for :



- Technical resources, including manuals, FAQs, etc.
- Technical support contact information
- Additional product information and special offers.

For more information or technical assistance, please call or email.

NanoEntek Inc.

851-14, Seohae-ro, Paltan-myeon, Hwaseong-si, Gyeonggi-do, 18531, Korea

Tel: +82-2-6220-7942

Fax: +82-2-6220-7999

NanoEntek America, Inc.

220 Bear Hill Road, Suite 102, Waltham, MA 02451, USA

Tel: +1-781-472-2558

Fax: +1-781-790-5649

Email

sales@nanoentek.com

Website

www.nanoentek.com

EVE™

Automated cell counter

NESMU-EVE-001E (V.1.6)



NanoEntek, Inc.

851-14, Seohae-ro, Paltan-myeon, Hwaseong-si, Gyeonggi-do,
18531, Korea

Tel. : +82-2-6220-7942 Fax. : +82-2-6220-7999

NanoEntek America, Inc.

220 Bear Hill Road, Suite 102, Waltham, MA 02451, USA

Tel: +1-781-472-2558 , Fax: +1-781-790-5649

Email

sales@nanoentek.com

Website

www.nanoentek.com