

SBS Tube Racks

Centrifuge Tube Holders



Organize Your Tubes... Prepare Your Reagents and Load

Alpaqua offers automation-friendly tube holders in a variety of configurations for 16mm and 50ml centrifuge tubes. To maximize deck flexibility all Alpaqua tube holders fit within a standard ALP (OneByOne) and allow your automated platform to aspirate and dispense directly to and from centrifuge tubes. Centrifuge tubes can be prepared on the lab bench when using Alpaqua tube holders as benchtop racks and then placed directly onto a robotic deck when needed.

- SBS footprint for easy automation
- No deck changes required for use
- Designed for visual access to full tube
- Custom configurations available
- Provided with a Biomek[®] labware definition



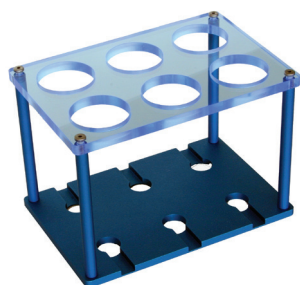
SBS Tube Rack

Centrifuge Tube Holders



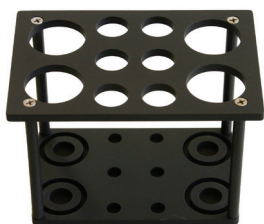
16mm Tube Rack

The 16mm tube rack from Alpaqua holds up to 24 tubes and is designed to accommodate a range of tube types from 15-16.6mm in diameter, such as 15mL centrifuge tubes (VWR, Axygen, BD, Corning, etc.), 12mL KIMAX® Culture tubes, Oragene® OG-500 tubes and Monoject™ Tubes. The 16mm tube rack is an SBS compliant deck accessory that allows for use on a variety of robotic platforms without requiring any deck alterations.



50mL Centrifuge Tube Rack

The 50mL tube rack from Alpaqua holds up to 6 tubes and is compatible with tubes up to 30mm in diameter including 50mL conical-bottom centrifuge tubes. Reagents can be prepared on the benchtop using Alpaqua's 50mL tube rack and then simply placed on any open deck position for simplified workflow. The 50mL tube rack is an SBS compliant deck accessory that allows for use on a variety of robotic platforms without requiring any deck alterations.



Combo Centrifuge Tube Rack for Biomek®

Alpaqua's Combo Centrifuge Tube Rack simultaneously holds four(4) 50mL tubes (up to 30mm) and six(6) 15mL tubes (up to 17mm) for maximum flexibility. The tube holder fits inside the opening of a standard ALP (OneByOne etc.), making it easy to place anywhere on the deck. The Combo Centrifuge Rack is compatible with Biomek® FX or NX instruments with Span-8 pods and 1mL tips.

Ordering Information

Buy online at www.alpaqua.com/store, or place your order by phone, fax, or email at sales@alpaqua.com.

Product Name	Description	Catalog #
16mm Tube Rack	Tube holder for (24) 16mm tubes	A000260
50mL Tube Rack	Tube holder for (6) conical-bottom 50mL tubes	A000290
Centrifuge Tube Rack	Tube holder for (4) conical-bottom or freestanding 50mL tubes & (6) 15mL tubes for Biomek ALPs	A000009

Tel: (800) 690-1620
Outside US: +1 (978) 878-9489
Fax: (978) 865-9499
www.alpaqua.com

Alpaqua, the wave logo, and Accelerating Genomic Discovery are registered trademarks of Alpaqua Engineering, LLC in the U.S. and/or other countries. Biomek is a registered trademark of Beckman Coulter, Inc. KIMAX is a registered trademark of Gerresheimer Glass Asset Management, Inc. Monoject is a trademark of Covidien AG. Oragene is a registered trademark of DNA Genotek, Inc.



©2016 Alpaqua Engineering. All Rights Reserved.
Document #0000260.2-1115