



Official Website



LinkedIn



# Snorkel

Automated Sample Repository System

For more information, visit [www.genepoint.com](http://www.genepoint.com)

The product is only for industrial or scientific research purposes, not for medical use.

It must not be used directly or indirectly for clinical diagnosis or other unauthorized clinical medical purposes.





## Redefining Laboratory Freezer

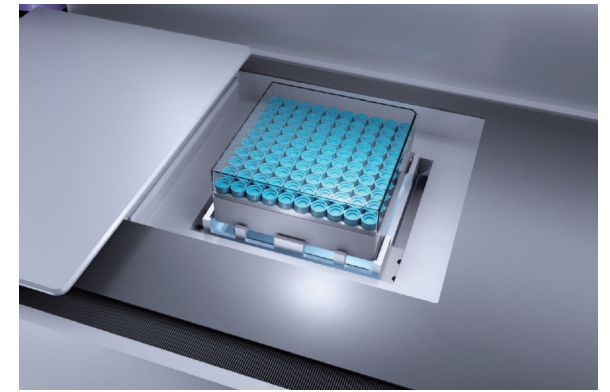
Snorkel is a new generation Automated Sample Repository System developed by Genepoint. It is fully customer-oriented and combines advanced refrigeration technology, exquisite mechanical engineering design, and user-friendly intelligent interaction, ensuring sample safety and convenient sample management.





150,000  
up to 150,000 vials

1,992  
with 1,992 mm height



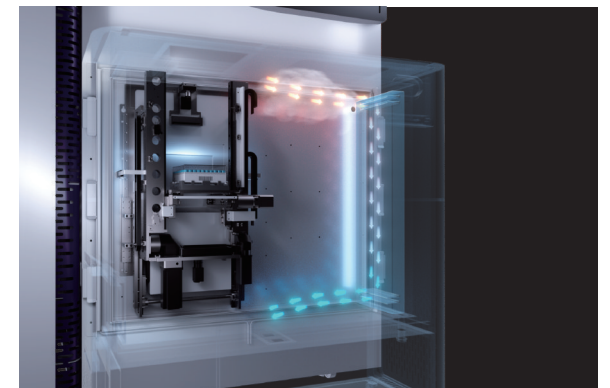
### Innovative Sample Retrieval

Automation design enables sample storage and retrieving at low temperatures. The target rack or vial can be obtained in seconds by a simple touch of the screen.



### Exclusive Storage Space

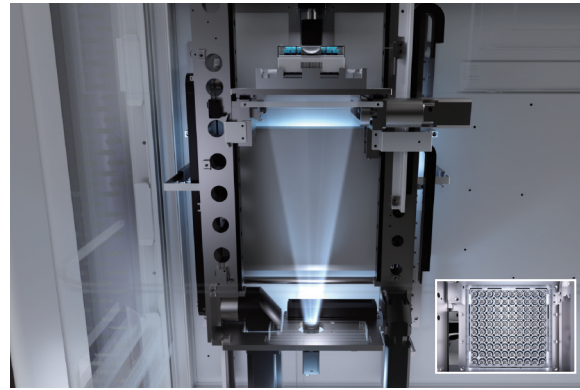
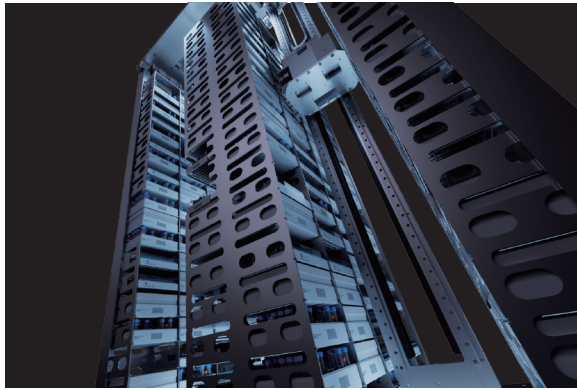
With an integrated facial identification, everyone can enjoy their own exclusive space, with guaranteed sample quality and safety. Personal operating preferences can also be recorded automatically.



### Moisture Prevention

Thermal stratification design creates a natural shield from convection and minimizes humidity. The front chamber is equipped with an air-cooled dehumidification system, with which you can say farewell to moisture in the storage area.



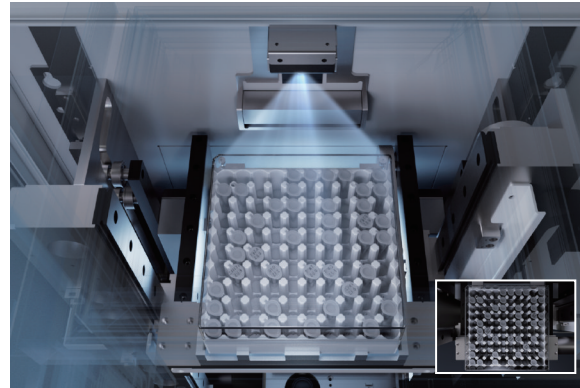
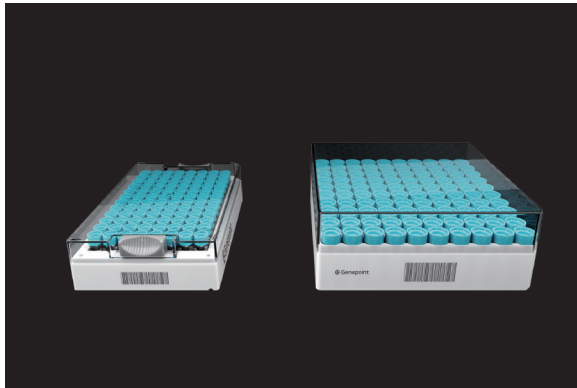


### User-Friendly Operation

The compact structural design allows easy transportation and installation without compromising the capacity. No auxiliary devices, such as vacuum pumps or air compressor etc., are required for daily operation. Plugged in and the Snorkel is ready for use.

### Pre-Installed Sample Management System

The SampleAtlas sample information management system is pre-installed and ready to use. The system provides Research mode and Biobank mode, supporting different information traceability requirement.

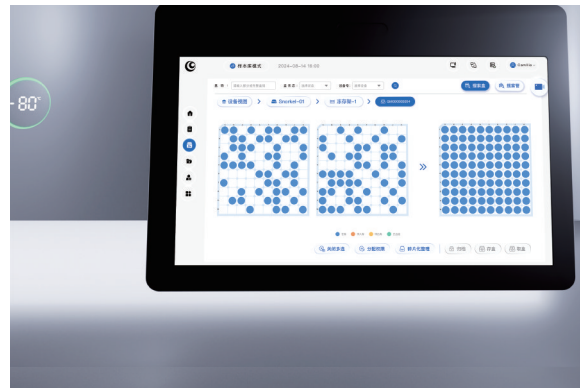


### A Wide Range of Labware Options Available

The system is not only adaptable to square cryoboxes or SBS boxes, but also compatible with most labware options, including EP vials, ELISA plates, PCR plates, 15-50mL centrifuge tubes, and paper cryopreservation boxes, etc..

### Innovative Intelligent Terminal

For samples without QR-code, top view snapshots can easily locate the target samples before samples leaving the storage place, preventing samples from freeze-and-thaw due to prolonged searching.



### Sample Safety is Top Priority

Featuring with dual independent cascading systems and liquid nitrogen backup systems, Snorkel can guarantee the safety of your samples. The external door of the storage chamber supports emergency opening for transfers. The automated mechanism can be slide off quickly with no impact on the storage environment.

### Effective Management Tool

Snorkel supports defragmentation and cycle counting in low-temperature. Statistical data such as throughput fragmentation rate and storage utilization rate can also be provided.

## Parameters and Configuration

Snorkel



Automated Rack Retrieving

Snorkel Max



Up to 150,000 Storage

Snorkel Pro



Automated Vial Retrieving

Snorkel Pro Max



Automated Vial Retrieving with Up to 150,000 Storage

### Technical Specifications

	Snorkel	Snorkel Max	Snorkel Pro	Snorkel Pro Max
Model	SAUF-1000/SAF-1000	SAUF-1500/SAF-1500	AUF-1000/AF-1000	AUF-1500/AF-1500
Temperature Control Range	-50 to -80°C/-10 to -40°C	-50 to -80°C/-10 to -40°C	-50 to -80°C/-10 to -40°C	-50 to -80°C/-10 to -40°C
Automated Rack Storing & Retrieving	Yes	Yes	Yes	Yes
Automated Vial Storing & Retrieving	N/A	N/A	Yes	Yes
Volume (L)	-1000	-1500	-1000	-1500
Dimensions (W*D*H, mm)	1480*1370*1992	1480*1780*1992	1480*1670*1992	1480*2080*1992
Trafficability Parameters (W*H, mm)	1000*2000	1400*2000	1000*2000	1400*2000
Maximum Storage (Cryo Box, 2mL)	39,000	63,000	39,000	63,000
Maximum Storage (SBS Rack, 0.75mL)	91,224	156,744	91,224	156,744
Sample Information Management System	Biobank Mode/Research Mode	Biobank Mode/Research Mode	Biobank Mode	Biobank Mode
Rack Reader	Yes	Yes	Yes	Yes
Electrical and Environment Requirements	220V, 50Hz; Standard RJ45 Network Port; Recommended Environment Temperature 15°C-28°C			

### Mandatory Accessories (Shelf Selection Table)

	Maximum Height of Racks/Vials	SAUF-1000/SAF-1000	SAUF-1500/SAF-1500	AUF-1000/AF-1000	AUF-1500/AF-1500
Cryo Box 133*133mm±1mm	≤37.8mm	SK-C05-1000	SK-C05-1500	SK-C05-1000	SK-C05-1500
	≤53mm	SK-C20-1000	SK-C20-1500	SK-C20-1000	SK-C20-1500
	≤127mm	SK-C150-1000	SK-C150-1500	N/A	N/A
SBS Rack 127.8*85.5mm±0.5mm	≤23.8mm	SK-S03-1000	SK-S03-1500	SK-S03-1000	SK-S03-1500
	≤37.8mm	SK-S05-1000	SK-S05-1500	SK-S05-1000	SK-S05-1500
	≤49.4mm	SK-S20-1000	SK-S20-1500	SK-S20-1000	SK-S20-1500
	≤58.6mm	SK-S10-1000	SK-S10-1500	SK-S10-1000	SK-S10-1500
	≤95.5mm	SK-S50-1000	SK-S50-1500	SK-S50-1000	SK-S50-1500

### Accessories (Apply Only to SAUF/SAF Series)

	Embedded Rack Reader	Embedded Low-Temperature Operation Platform
Model	SK-TS	SK-MO